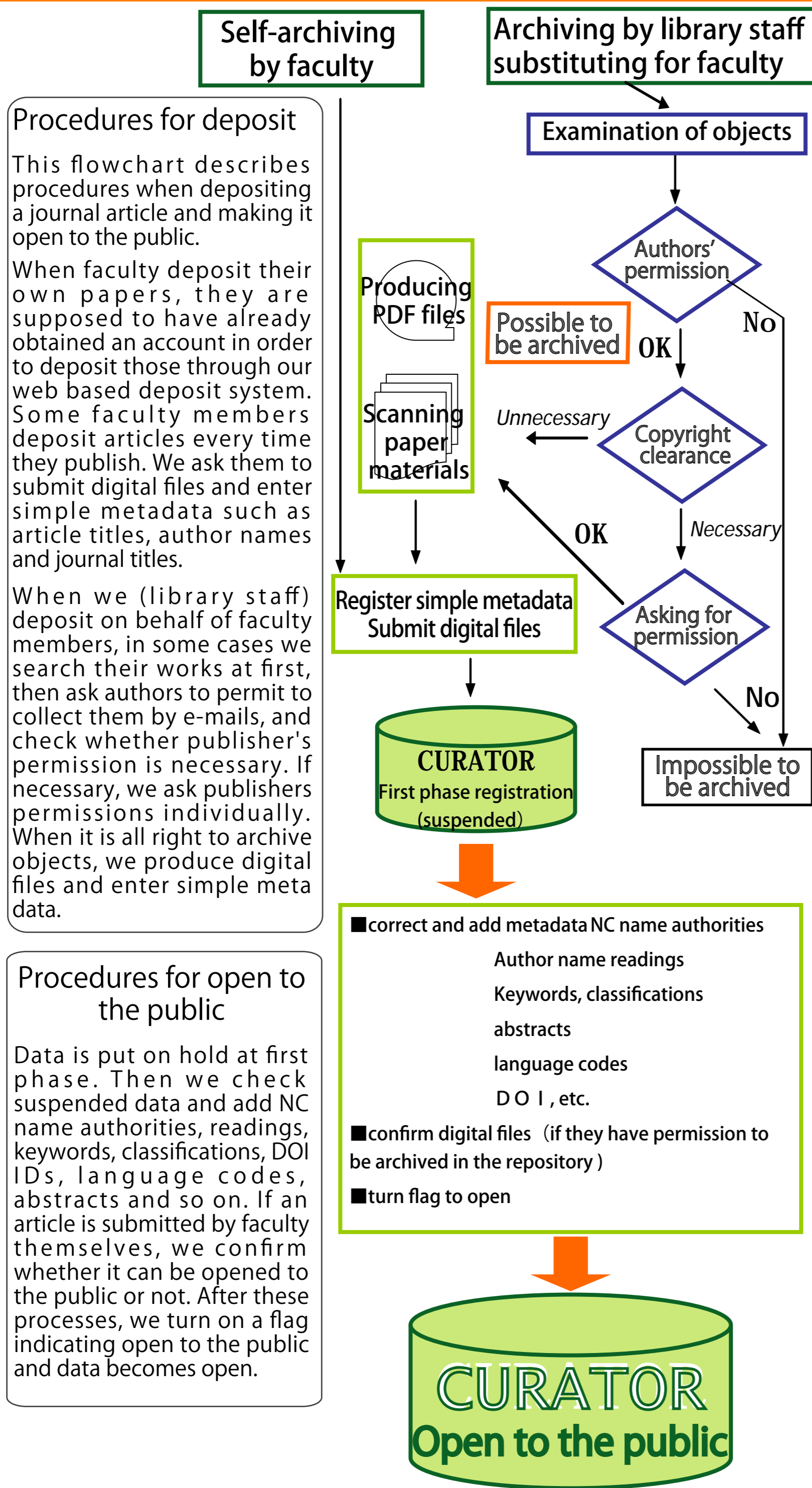




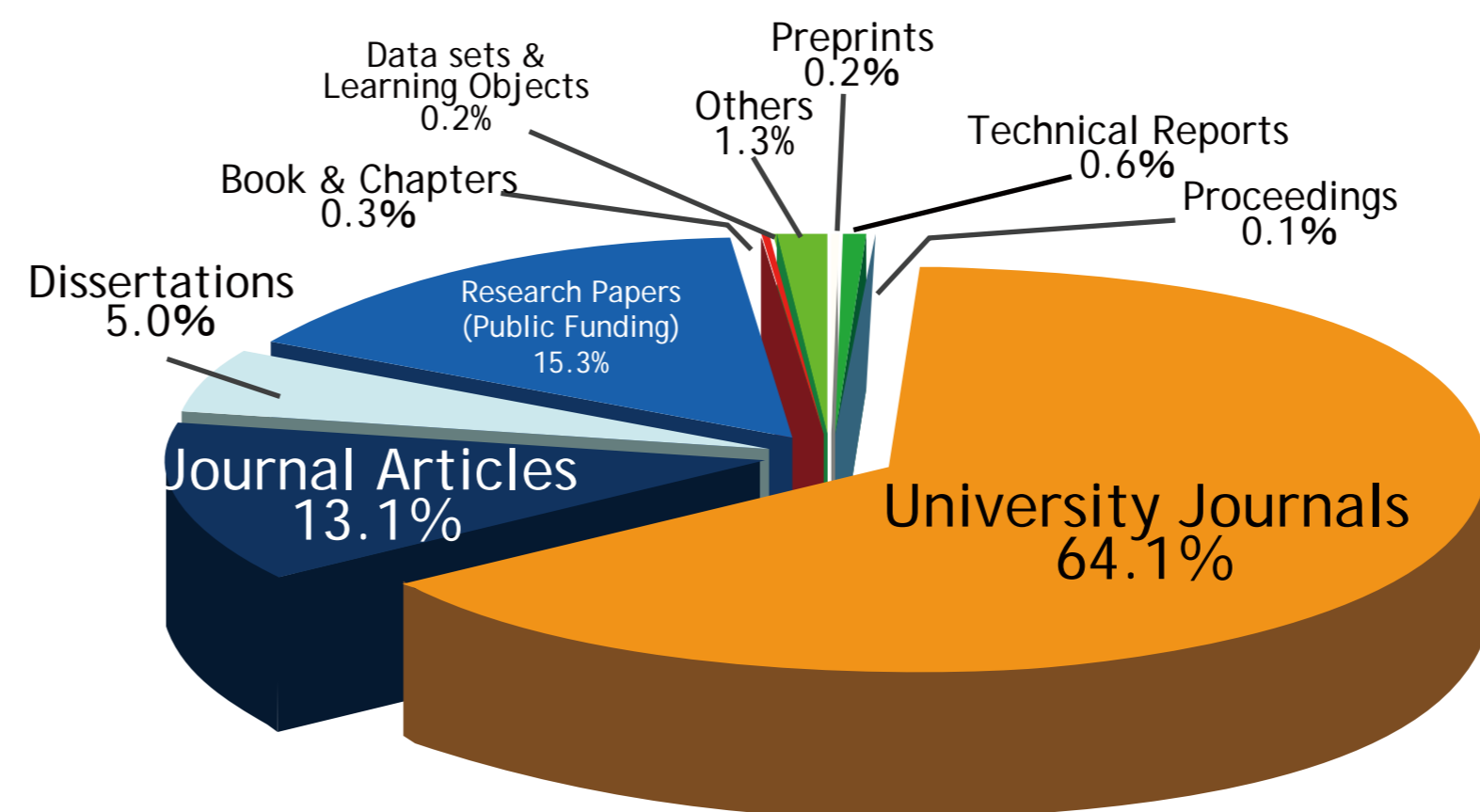
# CHIBA UNIVERSITY REPOSITORY for Access to Outcomes from Research

## Procedures for deposit and distribution (in case of journal articles)



## Current status of CURATOR's contents

Here is a breakdown of CURATOR's total contents. We are going to add a large number of university bulletins digitized with the help of NII Support Project for Research Bulletin Dissemination, so this proportion will change. We also intend to increase peer-reviewed journal articles and make efforts to get permissions from publishers. We regard dissertations as important contents for our repository and continue to collect them.

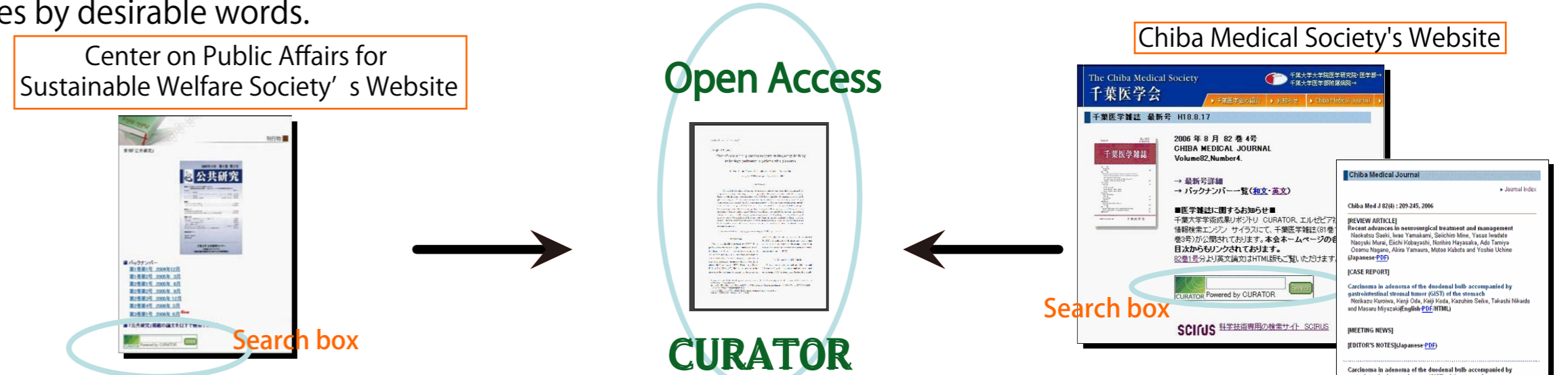


6,359 records  
(February, 2007)

We are planning to associate CURATOR with the database of researchers of Chiba University. It would be useful for researchers and could accomplish university's role in dissemination of its academic achievements.

## CURATOR supports university publishing overlay journal : link from faculty's sites and search

We have realized two overlay journals by working in cooperation with faculty members. Overlay journal means that publishers have their journals' online table of contents on their web sites, and it links to full-text data in the repositories. In addition, we have set search windows to their web site and they make possible to search journal articles by desirable words.



These projects are possible by collaboration with faculty members who are eager to disseminate their research information.

Journal on Public Affairs is the first overlay journal in Chiba university. This journal is published by Research Center on Public Affairs for Sustainable Welfare Society which studies on realization of sustainable welfare society.

Chiba Medical Journal has chosen to become an e-journal by itself to become a e-journal. English articles also have html files, so these can link to image files, PubMed, and other full text articles. We expect that it would increase impact of the research.

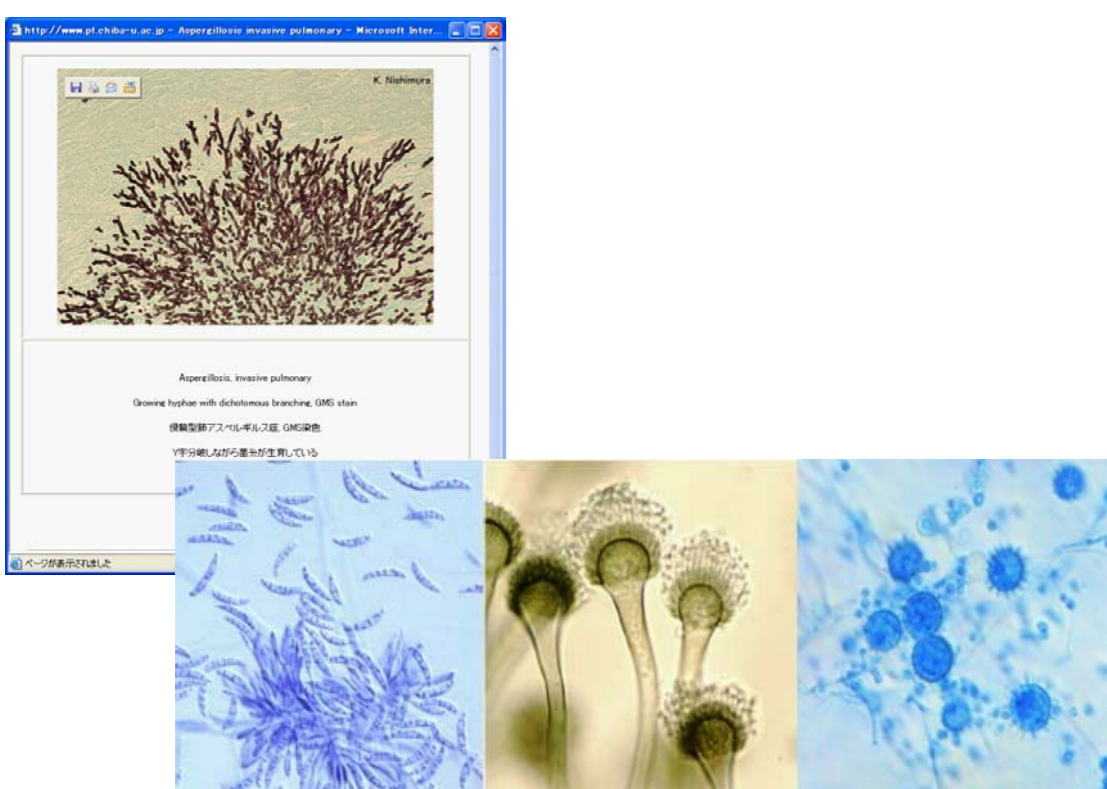
We are working hard to make our repository more useful, hoping it will be used as a strong tool for dissemination of research results. To accomplish this goal, for example, we cooperate with Scirus which is a large, free scientific search engine.

## CURATOR provides educational and research infrastructures: e-Science data

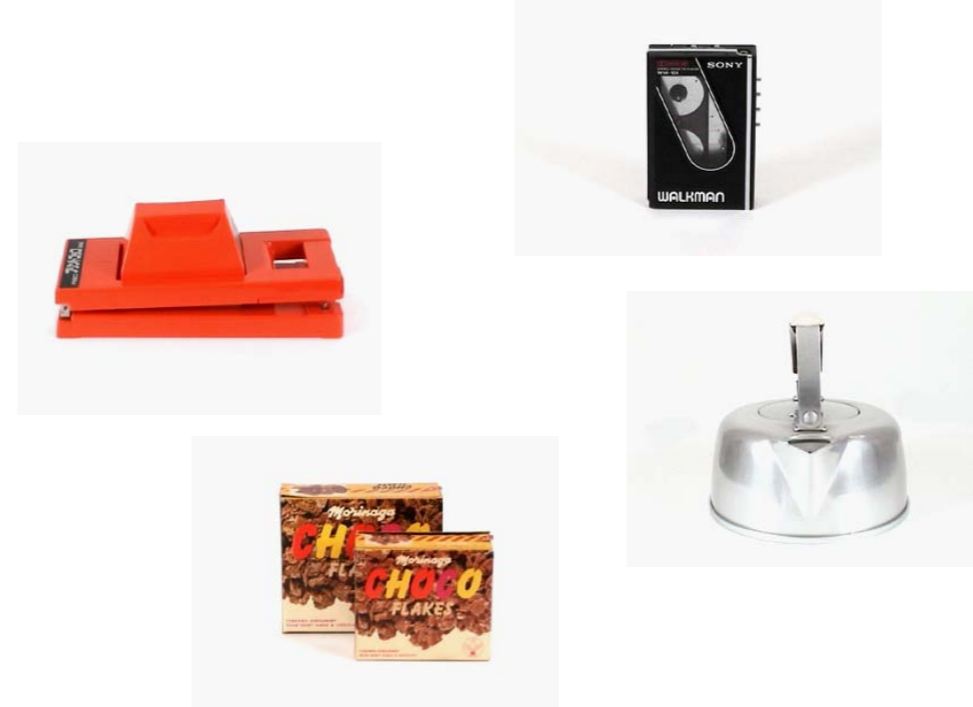
### Fungus and Actinomycete Gallery

Research Center for Pathogenic Fungi and Microbial Toxicoses uploads the pictures of pathogenic fungi and actinomycetes onto their web sites as Fungus and Actinomycete Gallery.

They asked us to store their data in CURATOR for the purpose of preservation of those pictures. We would like to support their plan, so we are preparing to archive these important image data with metadata such as scientific names, popular names for the convenience of ordinary people, and names of a diseases to make these data more visible.



### Industrial designs by alumni



The exhibition of major industrial design works created by alumni of the Department of Design in Chiba University Faculty of Engineering was held from April to May in this year at the Chiba City Museum of Art. It gained a good reputation.

We are preparing to preserve and provide these images of works using our repository in cooperation with the Department of Design and the Chiba City Museum of Art. We have requested the designers and the companies permission to archive over 300 works so far.

Some of them will be archived not only as still image files but also as movie files.

We expect that CURATOR will make the history and the collection of popular post-war industrial design produced by alumni will make the value of the Department of Design visible more widely.

### Satellite imageries

We are preparing to archive a large number of satellite imageries of Center for Environmental Remote Sensing (CEReS).

They have been providing databases of time-series satellite imageries of planets or certain regions on the earth and trying to find more efficient methods to provide their data in collaboration with CURATOR.

